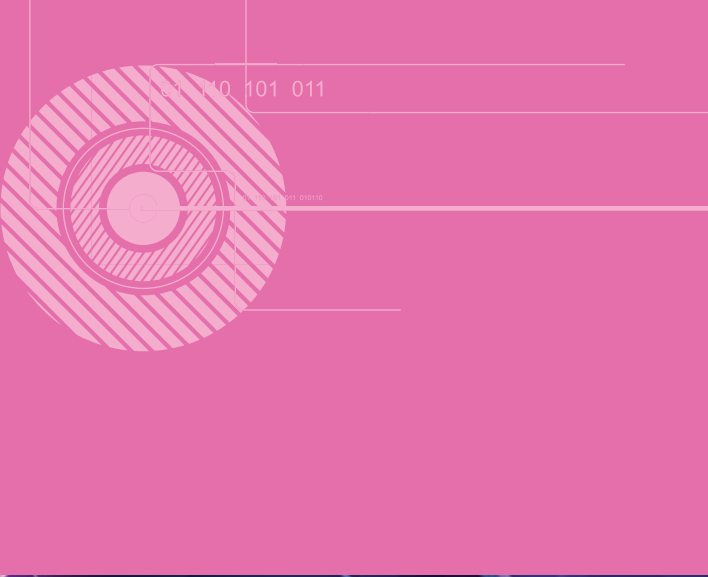


**Your powerful partner for
uninterrupted success**



The SHARK UPS is small enough to fit into the space demands of today's modern offices. A neat, compact design that hides a powerful heart. A two in one system that eliminates the need to have separate power back-up solutions for computers and other appliances, SHARK is designed to be aesthetically pleasing, and does not detract from the decor of your home or office.

SHARK
Digital UPS
650VA - 2500 VA



A powerful friend for every appliance

Su-Kam's Shark UPS range powers all IT equipment and major appliances found in homes and offices. A neat and compact design that hides a powerful heart.



Super quick during switch-over

The switch-over between mains power and battery is so fast, you won't even feel it. And the voltage is always kept within the safe range, to protect your precious IT equipment and sophisticated appliances.

Shark 650

650VA/12V

Design Registration No. 3811,
Copyright © 2010 Su-Kam Power Systems Ltd.



Micro-controller based operation

Based on the world's most advanced micro-controller technology which improves the efficiency of the whole system and provides clean power as well.



The SHARK advantage



Cut down your electricity bills

Optimal power consumption with micro controller based systems, saves your electricity bills. Highest power factor in this range.



Automatic low battery protection

Checks batteries while in battery mode to protect them from deep discharge. Alerts user during emergency with a buzzer sound.



A sleek new age look

A contemporary and stylish design makes the SHARK UPS amazingly good looking compared to its contemporaries. It blends style and practicality, that is hard for anyone else to match.

Modular trolleys that add value



STURDY

SHARK UPS comes with modular trolleys Knight and Sturdy* that looks good while also providing ease of operation with castor wheels for easier mobility.

* wheels optional



KNIGHT



Tubular: 150Ah to 180Ah



LA:100 to 200Ah



Compatibility with batteries

The three-way slider selection switch gives you the option to select any battery type and charging. This improves the back-up quality and enhances the battery life.

• SMF • TUBULAR • LA

For better performance use Su-Kam batteries.

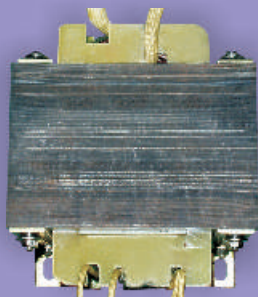
UPS / W-UPS mode

The two way slider selection switch gives you the option to select the system mode. You can select UPS mode for sensitive appliances like desktops, printers, scanners or W-UPS mode for tube-lights, fans and refrigerators.

High surge withstanding capability

It can withstand surge up to 300% of its actual capacity.

Design Registration No. 3811,
Copyright © 2010 Su-Kam Power Systems Ltd.



7 year guarantee

With Su-Kam enjoy 7 year guarantee on transformer.



Overall protection



Smart overload protection

Protects the appliances from breakdown in case of overload. The system gives a repeated beep alarm to inform the user about overload. In case the load is not reduced, the system will shut down automatically after 8 repeated beep alarms.



Smart short circuit protection

Protects the appliances in case of any short circuits. In case of short circuit the system beeps and retries 4 times. After 4 beeps, the system will shut down automatically.



Smart grid protection

Shark protects the system and appliances from various distortions present in the power supply and also provide short circuit protection through glass fuse in Shark 650VA/850VA/1500VA and through MCB (Miniature Circuit Breaker) in 2500VA.

Shark 1500

1500VA/24V

Design Registration No. 12031,
Copyright © 2010 Su-Kam Power Systems Ltd.



Uses Fuzzy Logic Charging Technology The smart thing to do



Su-Kam's advanced Fuzzy Logic controlled charging technology senses the requirement of the battery and controls the charging process accordingly. This ensures:



Huge savings on electricity

Su-Kam's FLC Technology senses the battery voltage and switches off the charger if there is no change in the battery voltage with respect to time, whereas the charger in normal inverter is constantly on. This leads to reduced energy consumption, hence saving on electricity bill.



Longer battery life

Su-Kam's FLC Technology senses the exact need of the battery every time. If an older battery is unable to accept the level of voltage defined earlier, it automatically sets a new level in accordance with the battery condition and charging need leading to enhanced battery life.

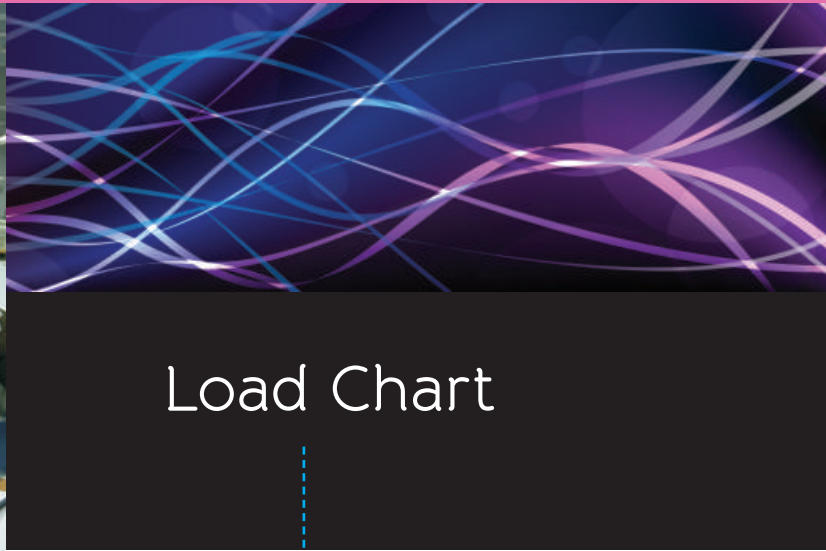
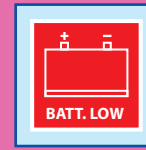
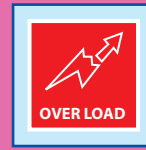
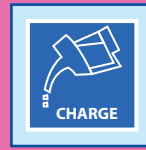
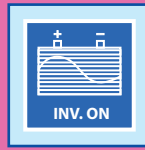


Reduced water topping

Su-Kam's FLC Technology controls the emission of gases while charging the battery, thus reducing the frequency of water topping significantly.

Smart graphical alerts

Easy-to-use and easy-to-understand graphical displays make it simple for users to know what's going inside the system.



Load Chart

SHARK 650VA/12V				
OPTION	A	B	C	D
Computer	-	-	-	1
Printer	-	-	-	1
Television	-	-	1	-
Tube Lights	3	-	2	-
Fans	3	-	2	1
CFL	2	28	5	3

SHARK 850VA/12V				
OPTION	A	B	C	D
Computer	-	-	-	1
Printer	-	-	-	1
Television	-	-	1	-
Tube Lights	4	-	3	1
Fans	4	-	3	1
CFL	2	37	5	5

SHARK 1500VA/24V				
OPTION	A	B	C	D
Computer	-	-	-	1
Printer	-	-	-	1
Television	-	-	1	-
Tube Lights	8	-	6	4
Fans	8	-	6	4
CFL	4	62	9	-

SHARK 2500VA/48V					
OPTION	A	B	C	D	E
Computer	-	-	-	8	-
Printer	-	-	-	1	-
Television	-	2	-	-	-
Tube Lights	12	10	8	-	3
Fans	12	10	8	-	3
CFL	12	8	8	4	6
Photocopier	-	-	-	-	1
Refrigerator*	-	-	1	-	-

Note: Indicative values only, actual calculations depend on manufacturer's specifications. Tube light of 40W, CFL of 11W, TV 19-21", 48mm Ceiling fan (3 blades, 1000-1200 sweep) & Computer (upto 150W). Refrigerator* (up to 320 ltr.) can be run with 2500VA/48V UPS but external Time Delay Relay (TDR) must be used. Recommended Battery - 100Ah-200Ah. When computer is running, TV is not recommended with 650VA & 850VA.

Ek nayi soch

Su-Kam is one of India's most admired power solutions providers with a growing presence across India and over 70 countries worldwide.

World-class Research & Development Team

Su-Kam prides itself in delivering products with a creative blend of design and innovation. After a rigorous R&D exercise, about 160 products have taken shape in 7 state-of-the-art manufacturing facilities. That's why our R&D unit has earned accolades and recognition from the Department of Scientific & Industrial Research of India. Today, the facility is credited with numerous patents and intellectual property rights in design, technology and innovation. Recently, it also won the Elcina-EFY Award for Excellence, 2010.

Research is currently under way to introduce a range of renewable solar energy products in the market.

Intellectual Property Rights

Su-Kam's has over 70 technology patents, 141 copyrights and 53 trademarks to its credit. It has 50 design patents. Nearly two technology patents are filed in a month, and the R&D team is poised to file a record breaking 100 technology patents in the coming days.

International Quality Certification

ISO 9001:2008 Quality Management System Certification
ISO 14001:2004 Environmental Management System Certification

Extensive Service Network

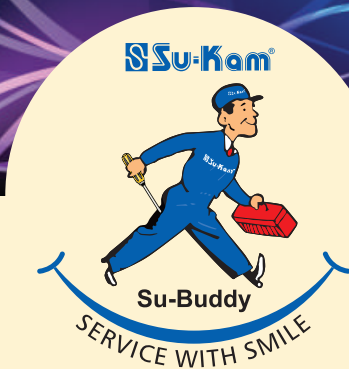
Pan India company owned service network.
Fully equipped service vans to provide door step service.

Partners in Growth

Su-Kam solar division has been approved by the Ministry of New and Renewable Energy (MNRE) and extends 30% subsidy to its customers.

Awards & Accolades

Enertia Award
Powerbrand India
Consumer Superbrand
Amity HR Growth Award
National Award for Quality Products
Sectoral Award for Highest Exports, Ministry of Commerce, Govt. of India
Business Model Innovation Award by Marico Innovation Foundation



Toll Free Helpline No.:
1800-102-4423

24x7 call login
facility

Su-Kam
Ek nayi soch

Su-Kam Power Systems Limited

Corporate Office: Plot No. 54,
Udyog Vihar, Phase VI, Sector-37,
Gurgaon - 122001, Haryana, INDIA
Tel: +91-124-4170500
Fax: +91-124-4038700/1/2
E-mail: info@su-kam.com
Website: www.su-kam.com

Certifications

ISO
9001:2008
ISO
14001:2004

R&D
Recognised
by
MINISTRY OF SCIENCE & TECHNOLOGY
GOVERNMENT OF INDIA